

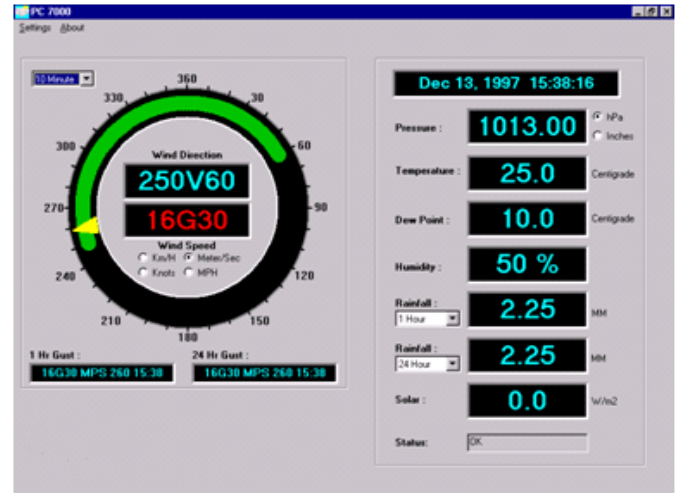
Weather Advisor™

Software for Meteorological Observation and Reporting

The *Weather Advisor* is an easy to use program for weather observation and reporting. The software runs on Windows XP and 2003 computers, and is designed to work with Mesotech's advanced sensors and data acquisition platforms. The program gathers data from one or more field stations and presents the data in a graphical format on the computer's monitor. Data can be logged to the computer's hard drive for analysis at a later time. The *Weather Advisor* automatically constructs standard reports, such as SYNOP and other local formats, which can be edited and approved by you before transmission, logging, or printing.

You can modify the *Weather Advisor's* operation and presentation. Choices can be made concerning the sensors or stations to be monitored, the units of measure (metric or US customary), data averaging periods, logging intervals, etc. The standard version of the program displays wind speed and direction, wind gusts and variations, barometric pressure, ambient air temperature, dew point temperature, relative humidity, rain fall rate, and solar intensity. Hydrology sensors and other parameters can be added as options. The software works with Mesotech's MicroDCP and data acquisition platforms to provide you with a fully integrated hardware and software system that is easy to set up and use.

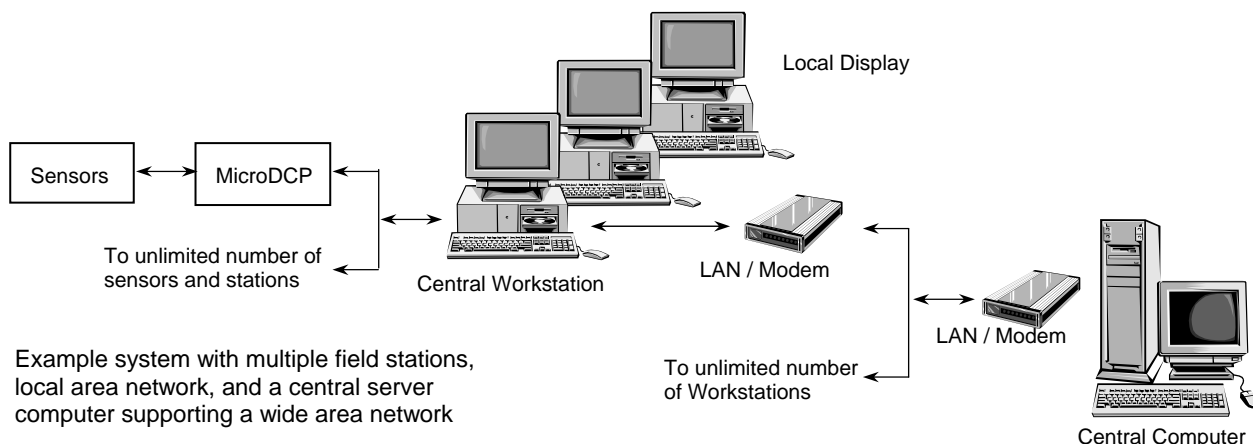
The *Weather Advisor* software is capable of connecting to an unlimited number of MicroDCP data acquisition stations. It supports all the MicroDCP's communication options, including high-speed wire lines, fiber cable, telephone modems, and RF telemetry. The collected data and



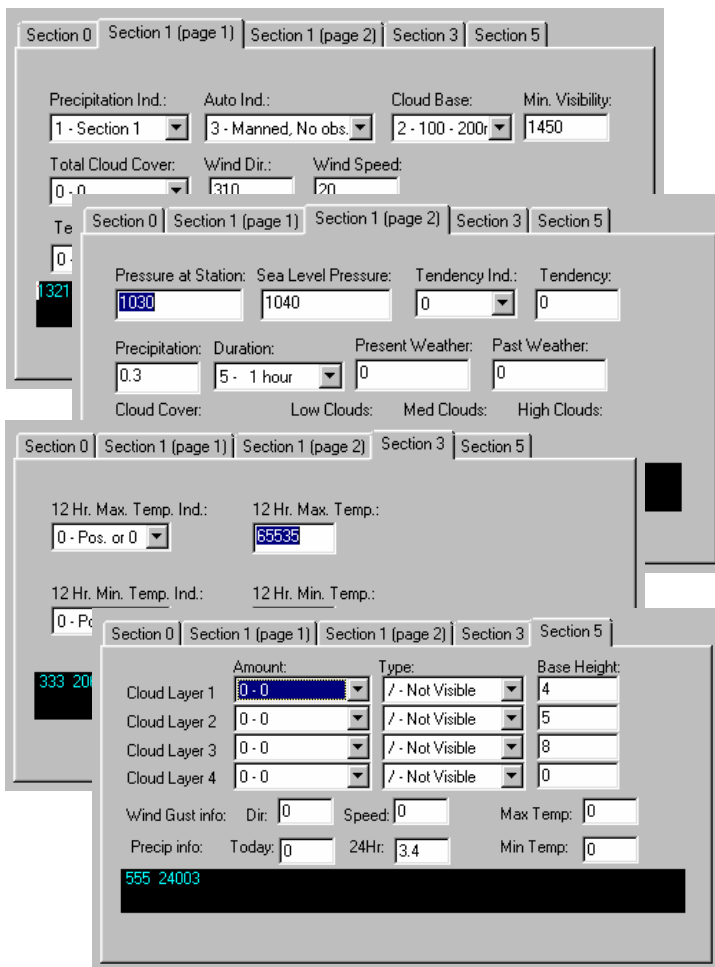
Main display page showing the standard parameters

observation reports can be distributed to other computers on a local area network (LAN). The *Weather Advisor* can be run while other programs are active on your computer.

The network server edition of the *Weather Advisor* provides you with the capability to manage a wide area network of workstations and data collection stations. The PC7000BS base station software will automatically retrieve data and reports from remote PC7000 workstations via telephone modem, LAN, RF telemetry, or across the Internet. This server edition supports Remote Access Service (RAS) to assist you in maintaining the remote workstations and their local networks. RAS essentially maps the remote workstation as a local file system, allowing you to pass files between LAN's, send email and reports, or upgrade software.



Example system with multiple field stations, local area network, and a central server computer supporting a wide area network



SYNOP and LOCAL formats are tailored to regional requirements.

The *Weather Advisor* supports configurations with servers and network clustering, hot-standby computers, RAID disk subsystems, and multi-processor architectures. This capability provides a level of performance and redundancy that can meet your strictest requirements for performance, distribution, and reliability. All communications standards are supported, including Ethernet, TCP/IP protocol, redundant high-speed serial links, and Remote Access Service.

Users find the *Weather Advisor's* graphical interface and network management extremely easy to use and interpret. On-line help provides step-by-step instructions for all functions. You will comfortably operate the program with minimum training and confusion. Data presentation, reporting, and analysis can be accessed with a single mouse click. You don't need to select and resize windows to display the information.

The *Weather Advisor* software allows you to fully edit the SYNOP report and other WMO reports, as well as your local reports. Data are automatically installed in a report template, and you can change the parameters or augment the report as conditions require. The digital voice subsystem provides text-to-speech conversion of the reports using pre-recorded human voices. The report editing capability and voice subsystem are optional modules. The reports and collected data are stored to the computer's hard disk in the standard ODBC database format or CSV spreadsheet format common to Windows data analysis applications. This means you can use your favorite analysis program on the stored files to make your reports.

Technical Specifications

Sensors & Stations:	Unlimited number of sensors Requires MicroDCP
Central Processing	Single or redundant backup with hot-standby, RAID disks, and NT network clusters
Computer Requirements:	Windows XP, 2003
Data Compliance:	Meets relevant WMO requirements
Configuration:	Programmable by user
Output Reports:	SYNOP and others as options
Voice Reports:	Text-to-speech processing in multiple in multiple languages.
Voice Outputs:	2 or more telephone lines (auto answer), RF transmitters.
Logging and Printing:	Automatic and official reports, sensor data. Intervals selected by user from 1 sec. ODBC files
Local Area Network:	100 BaseT, TCP/IP, 100BaseFL fiber optic, multipoint wire-line, RF
Wide Area Network:	TCP/IP, Remote Access Service
Workstations:	Unlimited number
Display Stations:	Unlimited number (networked version)
Chart Recorders:	Unlimited number
Report Distribution:	Unlimited number ports
Options:	Subsystem for voice reports WMO and local report formats Network configurations

Ordering Information

20500031	Single user version
20500032	Networked user version

